

इंटरनेट

मानक

Disclosure to Promote the Right To Information

Whereas the Parliament of India has set out to provide a practical regime of right to information for citizens to secure access to information under the control of public authorities, in order to promote transparency and accountability in the working of every public authority, and whereas the attached publication of the Bureau of Indian Standards is of particular interest to the public, particularly disadvantaged communities and those engaged in the pursuit of education and knowledge, the attached public safety standard is made available to promote the timely dissemination of this information in an accurate manner to the public.

“जानने का अधिकार, जीने का अधिकार”

Mazdoor Kisan Shakti Sangathan

“The Right to Information, The Right to Live”

“पुराने को छोड़ नये के तरफ”

Jawaharlal Nehru

“Step Out From the Old to the New”

IS 15093 (2002): Construction Drawings - Spaces for Drawing and for Text, and Title Blocks on Drawing Sheets [PGD 24: Drawings]



“ज्ञान से एक नये भारत का निर्माण”

Satyanarayan Gangaram Pitroda

“Invent a New India Using Knowledge”



“ज्ञान एक ऐसा खजाना है जो कभी चुराया नहीं जा सकता है”

Bhartrhari—Nitiśatakam

“Knowledge is such a treasure which cannot be stolen”

BLANK PAGE



भारतीय मानक

निर्माण ड्राइंग — ड्राइंग के कागज़ों पर ड्राइंग और पाठ तथा
शीर्षक ब्लॉक के लिए स्थान

Indian Standard

**CONSTRUCTION DRAWINGS — SPACES FOR
DRAWING AND FOR TEXT, AND TITLE BLOCKS ON
DRAWING SHEETS**

ICS 01.100.30

© BIS 2002

BUREAU OF INDIAN STANDARDS
MANAK BHAVAN, 9 BAHADUR SHAH ZAFAR MARG
NEW DELHI 110002

NATIONAL FOREWORD

This Indian Standard which is identical with ISO 9431:1990 'Construction drawings — Spaces for drawing and for text, and title blocks on drawing sheets' issued by the International Organization for Standardization (ISO) was adopted by the Bureau of Indian Standards on the recommendation of Drawings Sectional Committee and approval of the Basic and Production Engineering Division Council.

This standard specifies requirements concerning the placing, layout and contents of spaces for drawing and for text, and title blocks on construction drawings.

The text of ISO Standard has been approved as suitable for publication as Indian Standard without deviations. In this adopted standard, certain terminology and conventions are not identical to those used in Indian Standards. Attention is especially drawn to the following:

- a) Wherever the words 'International Standard' appear referring to this standard, they should be read as 'Indian Standard'.
- b) Comma (,) has been used as a decimal marker while in Indian Standards, the current practice is to use a full point (.) as the decimal marker.

In this adopted standard, reference appears to certain International Standards for which Indian Standards also exist. The corresponding Indian Standards, which are to be substituted in their place, are listed below along with their degree of equivalence for the editions indicated:

<i>International Standard</i>	<i>Corresponding Indian Standard</i>	<i>Degree of Equivalence</i>
ISO 3098-1 : 1974 Technical drawings — Lettering — Part 1 : Currently used characters	IS 9609 (Part 1) : 1983 Lettering on technical drawings : Part 1 English lettering (<i>first revision</i>)	Identical
ISO 7200 : 1984 Technical drawings — Title blocks	IS 11665 : 1985 Technical drawings — Title block	do

This adopted standard also gives Bibliography in Annex A, which is informative. The corresponding Indian Standards against the International Standards are given below along with their degree of equivalence for the editions indicated:

<i>International Standard</i>	<i>Corresponding Indian Standard</i>	<i>Degree of Equivalence</i>
ISO 128 : 1982 Technical drawings — General principles of presentation	IS 10714 : 1983 General principles of presentation on technical drawings	Identical
ISO 5457 : 1980 ¹⁾ Technical drawings — Sizes and layout of drawing sheets	IS 10711 : 2001 ²⁾ Technical product documentation — Sizes and layout of drawing sheets (<i>first revision</i>)	do ²⁾

¹⁾ ISO 5457 : 1980 since revised as ISO 5457 : 1999 'Technical product documentation — Sizes and layout of drawing sheets'.

²⁾ IS 10711 : 2001 is the adoption of ISO 5457 : 1999.

Indian Standard

CONSTRUCTION DRAWINGS — SPACES FOR DRAWING AND FOR TEXT, AND TITLE BLOCKS ON DRAWING SHEETS

1 Scope

This International Standard specifies requirements concerning the placing, layout and contents of spaces for drawing and for text, and title blocks on construction drawings.

2 Normative references

The following standards contain provisions which, through reference in this text, constitute provisions of this International Standard. At the time of publication, the editions indicated were valid. All standards are subject to revision, and parties to agreements based on this International Standard are encouraged to investigate the possibility of applying the most recent editions of the standards indicated below. Members of IEC and ISO maintain registers of currently valid International Standards.

ISO 3098-1:1974, *Technical drawings — Lettering — Part 1: Currently used characters.*

ISO 7200:1984, *Technical drawings — Title blocks.*

3 General layout (see figure 1 and figure 2)

The space on a drawing sheet is primarily divided into

- a space for drawing (see clause 4);
- a space for text (see clause 5);
- a title block (see ISO 7200).

4 Space for drawing

The figures comprising a drawing shall be arranged in horizontal rows and vertical columns. A main figure, if one is identified as such, shall be placed at

the top left of the drawing or at the top left of a group of figures. If possible, consideration shall be taken of A4-size folds of a drawing sheet when figures are drawn.

5 Space for text

5.1 General

The space for text on a drawing sheet shall contain all information necessary for the understanding of the contents of the drawing (see 5.2), except for the text which needs to be placed adjacent to the figures in the space for drawing.

The space for text shall normally be placed at the right-hand edge of the drawing sheet (see figure 1); the width of the space shall be equal to that of the title block, i.e. maximum 170 mm, or at least 100 mm.

If a figure takes up the whole width of the drawing sheet, the space for text shall be placed at the bottom edge of the drawing sheet (see figure 2); the height of the space shall be chosen as required. The space for text shall be divided into columns of appropriate width; if possible, account shall be taken of folds in a folded drawing when deciding on column width.

5.2 Information to be placed in space for text

5.2.1 General

The following information is normally placed in the space for text:

- explanations (see 5.2.2);
- instructions (see 5.2.3);
- references (see 5.2.4);
- location figure (see 5.2.5);

- revision table (see 5.2.6).

5.2.2 Explanations

Under "Explanations", information shall be given which is needed to read the drawing, e.g. explanations of special symbols, designations, abbreviations and units of dimensions.

5.2.3 Instructions

Under "Instructions", information, supplementary to the information in the space for drawing, shall be given which is needed to perform what is shown on the drawing, e.g. instructions relating to material, realization, surface treatment, assembly placing, number of units and combined dimensions.

If several objects are shown on the drawing, general instructions shall be placed in the space for text and special instructions shall be placed adjacent to the relevant figures.

5.2.4 References

Under "References", reference shall be made to supplementary drawings and other documents.

5.2.5 Location figure

A location figure shall be placed so that it remains visible after the drawing has been folded.

A location figure shall comprise, as required, the following figures:

- schematic site plan with area, arrow indicating the north, building, part of building, etc. marked (see figure 3);
- schematic plan of building with area, part, etc. indicated (see figure 4);
- schematic section through building with floor plan, direction of view, etc. indicated (see figure 5).

5.2.6 Revision table

A revision table shall be used to record all revisions such as corrections and/or amendments following the first issue. In addition, any other factor which might influence the validity of the drawing shall be recorded in the revision table.

A revision table shall contain the following information:

- designations of revision and, if required, number of places where correction has been made;

- details concerning the revision;
- date of revision;
- signature of person responsible for revision.

The width of the revision table shall be equal to either

- the width of the title block, if the revision table is placed immediately above the title block,
- at least 100 mm, if the revision table is placed to the left of the title block.

The height of each line in the revision table shall be in accordance with the rules given in ISO 3098-1 and shall meet the minimum requirement for spacing of base lines.

An example of the layout of a revision table is illustrated in figure 6.

5.3 Layout

Examples of the layout of the space for text on the drawing sheet are given in figure 7, figure 8 and figure 9.

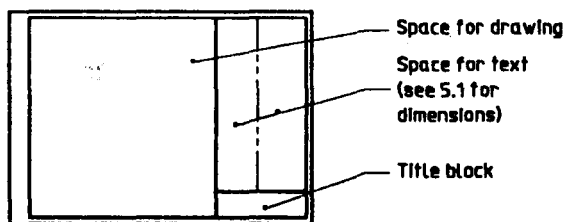


Figure 1

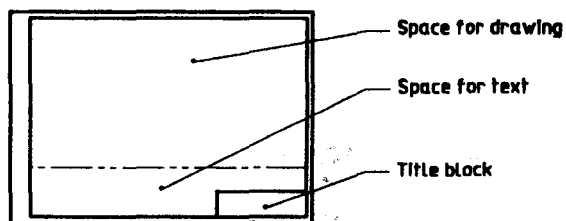


Figure 2

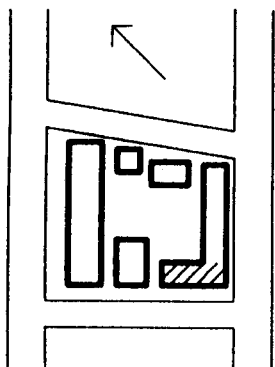


Figure 3

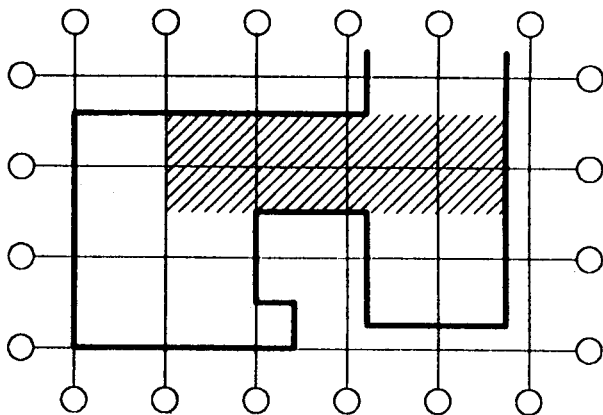


Figure 4

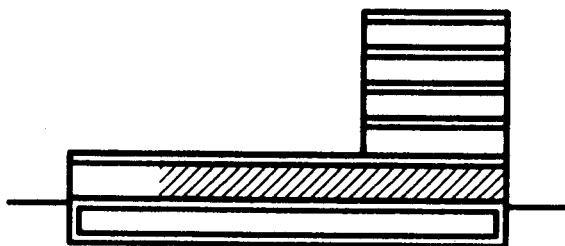


Figure 5

Dimensions in millimetres

5 min.	Designation	Details of revision	Date	Sign.
--------	-------------	---------------------	------	-------

Figure 6

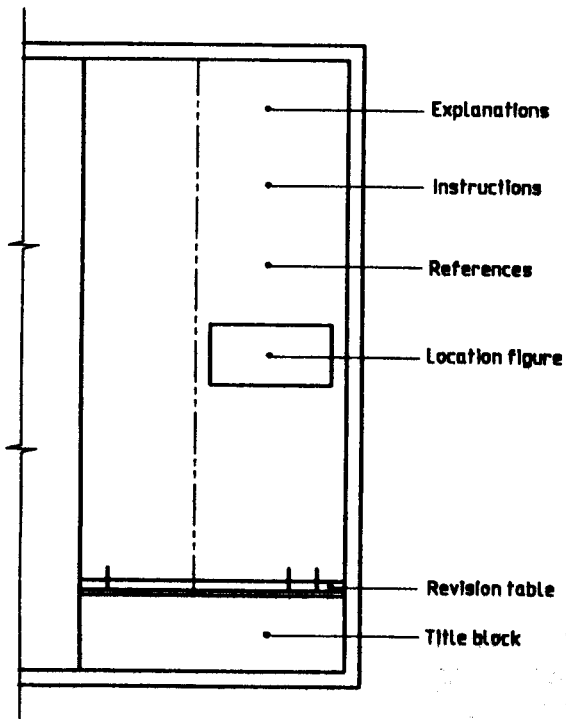


Figure 7

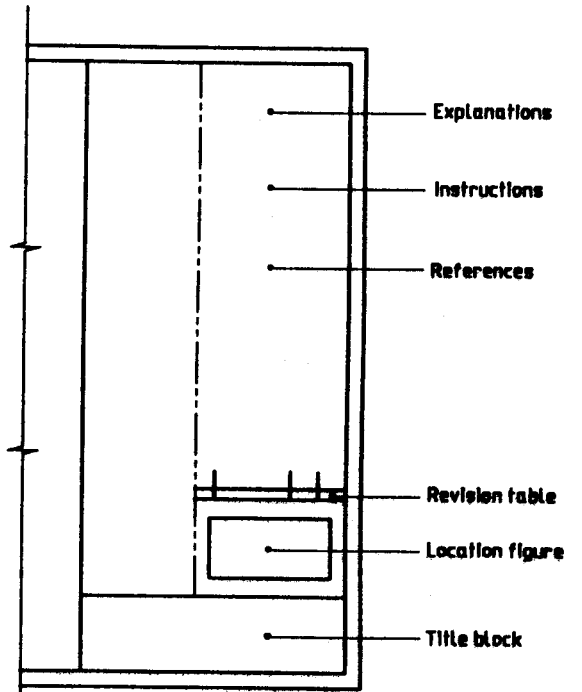


Figure 8

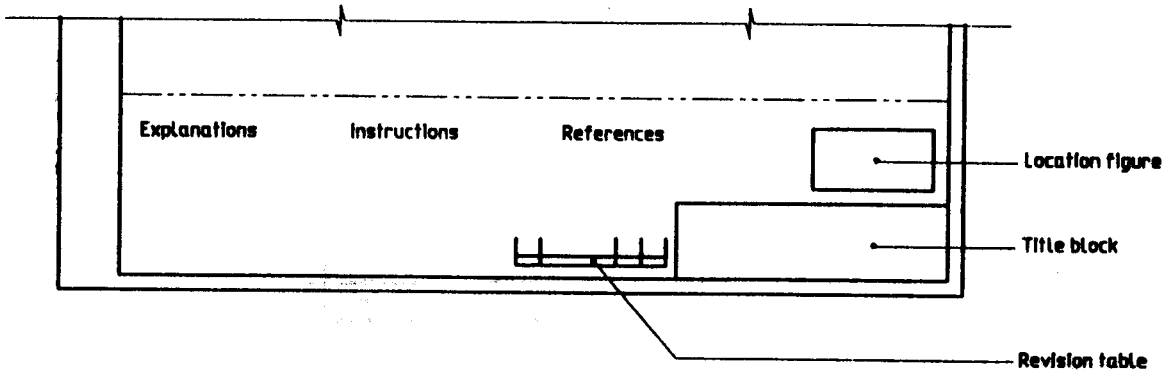


Figure 9

Annex A
(informative)

Bibliography

- [1] ISO 128:1982, *Technical drawings — General principles of presentation.*
- [2] ISO 5457:1980, *Technical drawings — Sizes and layout of drawing sheets.*
- [3] ISO 8048:1984, *Technical drawings — Construction drawings — Representation of views, sections and cuts.*

Bureau of Indian Standards

BIS is a statutory institution established under the *Bureau of Indian Standards Act, 1986* to promote harmonious development of the activities of standardization, marking and quality certification of goods and attending to connected matters in the country.

Copyright

BIS has the copyright of all its publications. No part of these publications may be reproduced in any form without the prior permission in writing of BIS. This does not preclude the free use, in the course of implementing the standard, of necessary details, such as symbols and sizes, type or grade designations. Enquiries relating to copyright be addressed to the Director (Publications), BIS.

Review of Indian Standards

Amendments are issued to standards as the need arises on the basis of comments. Standards are also reviewed periodically; a standard along with amendments is reaffirmed when such review indicates that no changes are needed; if the review indicates that changes are needed, it is taken up for revision. Users of Indian Standards should ascertain that they are in possession of the latest amendments or edition by referring to the latest issue of 'BIS Catalogue' and 'Standards : Monthly Additions'.

This Indian Standard has been developed from Doc : No. BP 24 (0161).

Amendments Issued Since Publication

Amend No.	Date of Issue	Text Affected

BUREAU OF INDIAN STANDARDS

Headquarters:

Manak Bhavan, 9 Bahadur Shah Zafar Marg, New Delhi 110 002
Telephones : 323 01 31, 323 33 75, 323 94 02

Telegrams: Manaksanstha
(Common to all offices)

Regional Offices :

Central : Manak Bhavan, 9 Bahadur Shah Zafar Marg
NEW DELHI 110 002

Telephone

{ 323 76 17
{ 323 38 41

Eastern : 1/14 C. I. T. Scheme VII M, V. I. P. Road, Kankurgachi
KOLKATA 700 054

{ 337 84 99, 337 85 61
{ 337 86 26, 337 91 20

Northern : SCO 335-336, Sector 34-A, CHANDIGARH 160 022

{ 60 38 43
{ 60 20 25

Southern : C. I. T. Campus, IV Cross Road, CHENNAI 600 113

{ 254 12 16, 254 14 42
{ 254 25 19, 254 13 15

Western : Manakalaya, E9 MIDC, Marol, Andheri (East)
MUMBAI 400 093

{ 832 92 95, 832 78 58
{ 832 78 91, 832 78 92

Branches : AHMADABAD. BANGALORE. BHOPAL. BHUBANESHWAR. COIMBATORE.
FARIDABAD. GHAZIABAD. GUWAHATI. HYDERABAD. JAIPUR. KANPUR.
LUCKNOW. NAGPUR. NALAGARH. PATNA. PUNE. RAJKOT. THIRUVANANTHAPURAM.